



Peer Support Program

Michelle Lacy, MA, LPC, PMH-C

MLacy@whiarizona.com

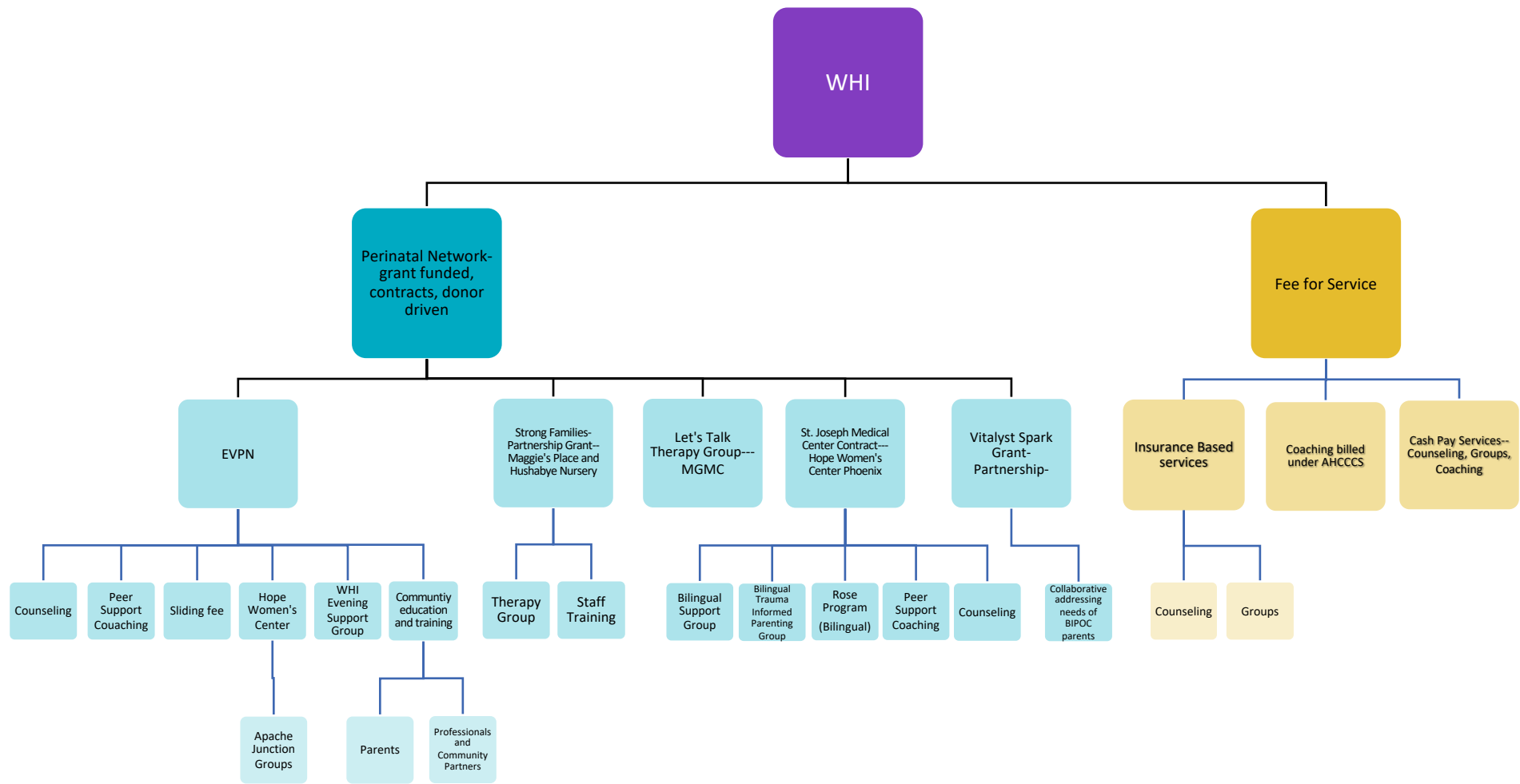


Women's Health Innovations of Arizona

Mission and vision to improve access to specialized care for all families from pregnancy through parenting.

- Outpatient Treatment Center
 - Specializing in Maternal Mental Health





Peer Role with WHI

- Part of the therapeutic team
- Bridge the Gap
 - First point of contact—triages needs, scheduling initial intake/screening
 - Intake screening
 - Case management
 - Peer support — in office, hospital setting, community partners, text/phone support and check ins
 - Co-facilitates groups with therapists
 - Weekly group supervision and individual supervision



Peer Support Pilot

- Recovery International
 - 2-week peer support certification program
 - Online and in person
 - Lessons learned
 - Childcare issues
 - Population
- Provided MMH training
 - 5 hours
 - Defining Perinatal Mood and Anxiety Disorders
 - Impact of the untreated illness
 - Barriers
 - Screening tools
 - Resources
 - Role of peer support with new moms and families



Who pays for peers?

- WHI- 501c3
 - Grant funded programs
 - East Valley Perinatal Network
 - Strong Families
 - WHI re-investment
- Hospital Contracts
- Billing Medicaid—Arizona Healthcare Cost Containment System (AHCCCS)



Billing Process for WHI

- Licensed Outpatient Treatment Center
 - 3-6-month process
 - Bill under the group
- Credentialed with the individual AHCCCS plans
 - Timeline varies
 - Includes appeals



Billing Codes

- H0002- Behavioral Health Screening to determine eligibility for admission to treatment.
 - Reimburses per unit (15 minutes).
- H0031- Mental Health Assessment by non physician
 - Reimburses ranges per fee schedule (must be signed off by licensed supervisor, plan dependent, location dependent)
- H0004- 1:1 Peer Support coaching session
 - HQ modifier for group setting
 - Reimburses - per unit (15 minutes) in office
 - Reimburses per unit out of office
- T1016 HO-- Case Management





Questions.....

